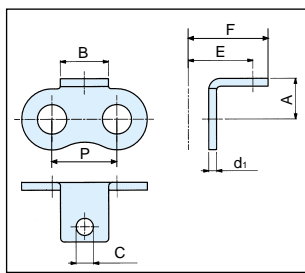
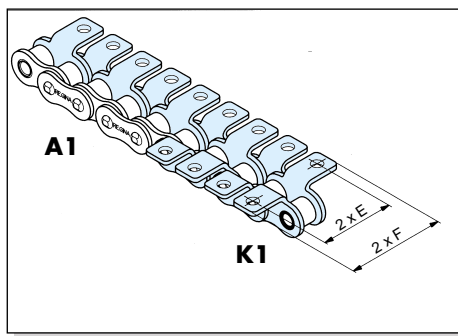
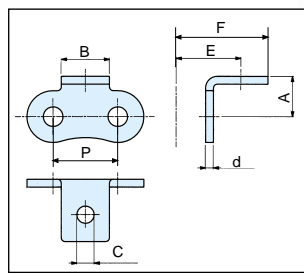


ROLLER CHAINS WITH A1 \ K1 TYPE ATTACHMENTS

CATENE A RULLI CON ATTACCHI TIPO A1 \ K1



Roller link
Maglia interna



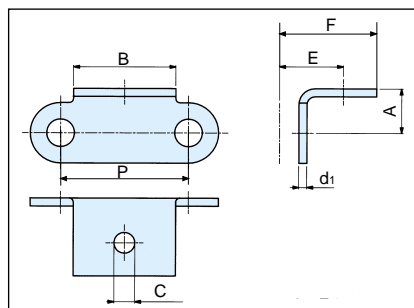
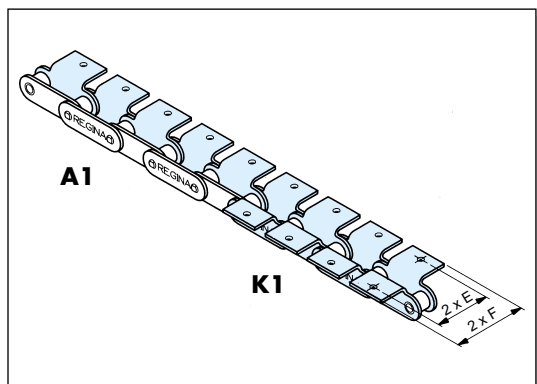
Pin link
Maglia esterna

APPLICATION
APPLICAZIONE **G**

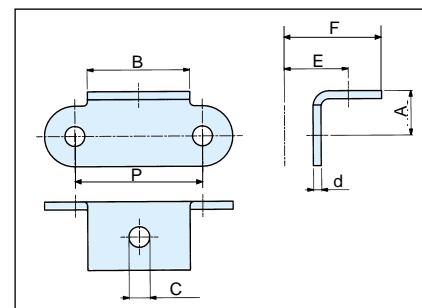


ISO N°	Regina Chain N° Codice Catena Regina	Pitch Passo		Roller Diameter Diametro Rullo	Inside Width Larghezza interna	Attachment N° Codice Attacco	Attachment on roller link Attacco sulla maglia interna	Attachment on pin link Attacco sulla maglia esterna	Materials Materiali	Attachment dimensions Dimensioni attacchi						Add. weight per attachment Peso aggiuntivo per attacco kg	Availability Disponibilità	
		P mm	" inches							Dr mm	W mm	A mm	B mm	C mm	d1 mm			d mm
EUROPEAN SERIES - SINGLE PITCH SERIE EUROPEA - PASSO SEMPLICE																		
06B-1	C121	9,525	3/8	6,35	5,72	A1 / K1	x	x	cs,ss	6,50	8,00	3,50	1,27	1,03	9,50	13,50	0,001	●
06B-1	C121	9,525	3/8	6,35	5,72	143		x	cs	8,00	9,00	3,50	-	1,03	15,05 (16)	21 (22)	0,002	●
06B-1	C121	9,525	3/8	6,35	5,72	146	x		cs	8,00	9,00	4,10	1,27	-	15,33 (16)	20,33 (21)	0,002	○
06B-1	C121	9,525	3/8	6,35	5,72	1012A	x		ss	6,50	8,00	2,80	1,27	-	9,43	13,43	0,002	○
06B-1	C121	9,525	3/8	6,35	5,72	1015A		x	ss	6,50	8,00	2,80	-	1,03	9,18	13,18	0,002	○
082	50	12,70	1/2	7,75	2,38	146	x		cs	7,00	10,50	4,10	-	0,92	8,75	15,25	0,001	●
083	54	12,70	1/2	7,75	4,88	136		x	cs	7,20	9,50	3,50	-	1,40	9,39 (9,70)	16,19 (16,5)	0,001	●
083	54	12,70	1/2	7,75	4,88	A1 / K1	x	x	cs,ss	7,20	9,50	4,30	1,40	1,40	11,80	16,50	0,002	●
08B-1	126	12,70	1/2	8,51	7,75	170	x		cs	8,40	9,50	5,00	1,63	-	12,38	18,50	0,005	○
08B-1	126	12,70	1/2	8,51	7,75	171		x	cs	8,40	9,50	5,00	-	1,40	12,36	16,86	0,002	●
08B-1	126	12,70	1/2	8,51	7,75	A1 / K1	x	x	cs,ss	8,40	9,50	4,30	1,63	1,40	14,10	18,60	0,002	●
08B-1	8126	12,70	1/2	8,51	7,75	A1 / K1		x	cs	8,90	9,50	4,3/5,5	-	1,40	39,60	28,20	0,003	●
10B-1	136	15,875	5/8	10,16	9,65	151		x	cs	10,30	14,10	5,20	-	1,53	16,31 (16,65)	23,01	0,003	○
10B-1	136	15,875	5/8	10,16	9,65	193		x	cs	11,45	17,50	6,50	-	1,53	14,96 (15,30)	23,66	0,007	○
10B-1	136	15,875	5/8	10,16	9,65	163A		x	ss	10,30	14,10	6,80	-	1,53	14,96 (15,30)	23,01	0,003	○
10B-1	136	15,875	5/8	10,16	9,65	A1 / K1	x	x	cs,ss	10,40	14,10	5,20	1,63	1,53	15,90	23,80	0,003	●
10B-1	8136	15,875	5/8	10,16	9,65	A1 / K1		x	cs	10,30	14,10	5,3/7,55	-	1,53	33,60	50,00	0,006	●
12B-1	140	19,05	3/4	12,07	11,68	146		x	cs	9,70	28,00	6,10	-	1,80	20,09	30,19 (35,2)	0,010	○
12B-1	140	19,05	3/4	12,07	11,68	1030		x	cs	12,00	15,85	6,40	-	1,90	17,19 (17,5)	25,49 (25,80)	0,005	●
12B-1	140	19,05	3/4	12,07	11,68	1051A		x	ss	12,00	18,00	6,20	-	1,80	17,09 (17,6)	26,89 (31,9)	0,005	●
12B-1	140	19,05	3/4	12,07	11,68	A1 / K1	x	x	cs,ss	12,00	16,00	5,60	1,90	1,90	17,50	25,80	0,005	●
12B-1	8140	19,05	3/4	12,07	11,68	A1 / K1		x	cs	13,45	15,85	6,4/7,75	-	1,90	38,10	52,20	0,010	●
16B-1	147	25,40	1	15,88	17,02	166	x		cs	15,90	18,85	M6	3,80	-	25,40	37,40	0,014	●
16B-1	147	25,40	1	15,88	17,02	167		x	cs	15,90	18,85	M6	-	3,10	25,40	37,40	0,014	●
16B-1	147	25,40	1	15,88	17,02	178		x	cs	28,10	25,40	6,20	-	3,10	32,51 (33,1)	45,51 (46,1)	0,022	●
16B-1	147	25,40	1	15,88	17,02	A1 / K1	x	x	cs,ss	15,90	19,00	6,80	3,80	3,00	25,40	37,40	0,014	●
20B-1	152	31,75	1 1/4	19,05	19,56	140		x	cs	19,85	25,25	8,80	-	3,35	32,50	42,75	0,020	●
20B-1	152	31,75	1 1/4	19,05	19,56	144		x	cs	22,00	45,00	10,20	-	4,15	32,90	45,40	0,054	○
20B-1	152	31,75	1 1/4	19,05	19,56	148		x	cs	21,00	30,00	10,50	-	4,15	34,40	49,25	0,043	○
20B-1	152	31,75	1 1/4	19,05	19,56	158		x	cs	19,85	25,25	10,50	-	3,35	31,65	42,75	0,018	○
20B-1	152	31,75	1 1/4	19,05	19,56	170		x	cs	19,85	25,25	8,50	-	3,35	32,20	42,75	0,020	○
20B-1	152	31,75	1 1/4	19,05	19,56	A1 / K1	x	x	cs	19,85	25,25	8,40	-	3,35	31,75	42,85	0,020	●
24 B-1	157	38,10	1 1/2	25,40	25,40	139		x	cs	28,00	38,50	10,50	-	4,60	43,30	61,10	0,075	○
24 B-1	157	38,10	1 1/2	25,40	25,40	A1 / K1	x	x	cs	26,70	28,00	11,00	6,15	4,60	38,10	51,85	0,047	○
32 B-1	165	50,80	2	34,30	34,30	139		x	cs	46,50	35,00	7,00	-	6,15	52,25	66,20	0,096	○

AMERICAN SERIES - SINGLE PITCH SERIE AMERICANA - PASSO SEMPLICE																		
06C-1	A35	9,525	3/8	5,08	4,77	A1 / K1	x	x	cs,ss	6,30	7,90	2,28	1,27	1,27	9,50	13,50	0,001	●
08A-1	A40	12,70	1/2	7,95	7,85	A1 / K1	x	x	cs,ss	7,90	9,50	3,30	1,53	1,53	12,70	17,70	0,001	●
10A-1	A50	15,875	5/8	10,16	9,40	A1 / K1	x	x	cs,ss	10,30	14,10	5,20	2,00	2,00	15,90	23,80	0,004	●
12A-1	A60	19,05	3/4	11,91	12,57	A1 / K1	x	x	cs,ss	11,90	15,85	5,60	2,30	2,30	19,00	27,35	0,006	●
16A-1	A80	25,40	1	15,88	15,75	A1 / K1	x	x	cs,ss	15,90	18,85	6,80	3,10	3,10	25,40	34,80	0,012	●
20 A-1	A100	31,75	1 1/4	19,05	18,90	144		x	cs	19,85	25,40	6,50	-	3,80	33,40	41,80	0,028	○
20A-1	A100	31,75	1 1/4	19,05	18,90	A1 / K1	x	x	cs,ss	19,85	22,25	8,80	3,80	3,80	31,75	42,20	0,024	●
24A-1	A120	38,10	1 1/2	22,23	25,22	143		x	cs	23,00	28,60	8,80	-	4,80	38,00	52,40	0,059	○
24A-1	A120	38,10	1 1/2	22,23	25,22	A1 / K1	x	x	cs	23,00	28,45	11,00	4,60	4,60	38,10	52,40	0,038	○
28A-1	A140	44,45	1 3/4	25,40	25,22	A1 / K1	x	x	cs,ss	28,60	34,85	11,50	5,45	5,45	44,50	60,60	0,067	○
32A-1	A160	50,80	2	28,58	31,55	A1 / K1	x	x	cs	31,80	37,85	13,10	6,15	6,15	50,80	70,50	0,095	○



Roller link
Maglia interna



Pin link
Maglia esterna

ISO N°	Regina Chain N° Codice Catena Regina	Pitch Passo		Roller Diameter Diametro Rullo	Inside Width Larghezza interna	Attachment N° Codice Attacco	Attachment on roller link Attacco sulla maglia interna	Attachment on pin link Attacco sulla maglia esterna	Materials Materiali	Attachment dimensions Dimensioni attacchi						Add. weight per attachment Peso aggiuntivo per attacco	Availability Disponibilità
		P mm	" inches							Dr mm	W mm	A mm	B mm	C mm	d1 mm		

EUROPEAN SERIES - DOUBLE PITCH SERIE EUROPEA - PASSO DOPPIO

208 B	2126	25,40	1,00	8,51	7,75	A1,K1	x		cs,ss	8,90	19,00	4,30	1,63		14,05	18,60	0,003	●
208 B	2126	25,40	1,00	8,51	7,75	A1,K1		x	cs,ss	8,90	19,00	4,30		1,40	14,05	18,60	0,003	○
210 B	2136	31,75	1,25	10,16	9,65	139	x		cs	7,75	18,00	5,00	1,63		11,48	19,98	0,003	○
210 B	2136	31,75	1,25	10,16	9,65	140		x	cs	7,75	18,00	5,00		1,63	15,06	23,46	0,003	●
210 B	2136	31,75	1,25	10,16	9,65	141	x		cs	7,75	18,00	4,00	1,63		14,28	21,78	0,004	●
210 B	2136	31,75	1,25	10,16	9,65	142		x	cs	7,75	18,00	4,00		1,63	14,28	21,78	0,004	●
210 B	2136	31,75	1,25	10,16	9,65	A1,K1	x		cs,ss	7,75	18,00	5,00	1,63		29,00	38,00	0,007	●
210 B	2136	31,75	1,25	10,16	9,65	A1,K1		x	cs,ss	7,75	18,00	5,00		1,53	29,00	38,00	0,007	●

AMERICAN SERIES - DOUBLE PITCH SERIE AMERICANA - PASSO DOPPIO

C208AS	C2040	25,40	1	7,95	7,85	A1,K1	x	x	cs,ss	11,10	19,00	3,20	1,53	1,53	12,70	19,10	0,004	●
C210AS	C2050	31,75	1 1/4	10,16	9,40	136	x		cs	2,55	10,30	5,15	2,00		23,35	30,15	0,001	○
C210AS	C2050	31,75	1 1/4	10,16	9,40	137		x	cs	2,55	10,30	5,15		2,00	23,35	30,15	0,001	○
C210AS	C2050	31,75	1 1/4	10,16	9,40	A1,K1	x	x	cs,ss	11,10	25,40	5,20	2,00	2,00	15,90	24,20	0,007	●
C210A-H	C2050H	31,75	1 1/4	10,16	9,40	159		x	cs	11,10	25,40	5,20		2,40	15,90	24,20	0,01	●
C212A-H	C2060H	38,10	1 1/2	11,91	12,57	A1,K1	x	x	cs,ss	14,70	28,00	5,60	3,25	3,25	21,40	30,20	0,011	●
C216A-H	C2080H	50,80	2	15,88	15,75	156		x	cs	19,00	38,00	M8	-	4,00	27,80	39,30	0,031	○
C216A-H	C2080H	50,80	2	15,88	15,75	157		x	cs	13,80	38,00	8,80	-	3,80	27,80	45,00	0,031	○
C216A-H	C2080H	50,80	2	15,88	15,75	A1,K1	x	x	cs	19,00	38,00	6,80	3,80	3,80	27,80	39,30	0,031	●
C220A-H	C2100H	63,50	2 1/2	19,05	18,90	151		x	cs	23,40	47,35	13,00	-	4,60	33,30	49,20	0,057	○
C220A-H	C2100H	63,50	2 1/2	19,05	18,90	A1,K1	x	x	cs	23,40	47,50	8,80	4,80	4,80	33,30	49,20	0,058	○
C224A-H	C2120H	76,20	3	22,23	25,22	A1,K1	x	x	cs	27,80	57,00	11,00	5,45	5,45	39,70	59,20	0,096	●

UF LL - ISO LL SERIES

FLEYER UF LL - ISO LL

APPLICATION
APPLICAZIONE

Applications: For applications where it is important to have a high ratio between breaking load and weight, and low cost. This series is used in cases where the load applied is essentially static, with infrequent articulations on the pulleys and low speeds.

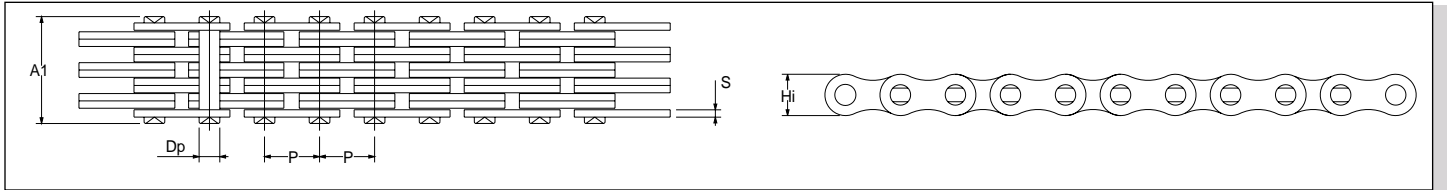
Construction: Plates and pins are equal in terms of profile, thickness and diameter to European series roller chain of same pitch. This is a series standardized by ISO norms.

Most common combinations: 2x2, 4x4, 6x6. Special combinations are supplied to solve specific applications and to better balance fatigue resistance between components.

Campo di applicazione: Applicazioni dove si privilegia un alto rapporto fra carico di rottura e peso e basso costo. Questa serie è quindi adoperata in casi in cui il carico applicato è essenzialmente statico, con poco frequenti articolazioni sulle pulegge e basse velocità.

Costruzione: Piastre e perni uguali, come profilo, spessore e diametro a quelli delle catene a rulli serie Europea dello stesso passo. E' una serie unificata dall'ISO.

Combinazioni più comuni: 2x2, 4x4, 6x6. Combinazioni speciali fornite per risolvere casi specifici e migliorare l'equilibrio a fatica.



ISO N°	Regina Chain N° Codice Catena Regina	Combination Composizione	Pitch Passo	Max pin diam. Diametro perno max	Max plate height Altezza piastra max	Plate thickness Spessore piastra	Max riveted pin width Larghezza perno ribadito	Min. ultim. strength Carico di rottura min.	Min. ultim. strength ISO Carico di rottura min. ISO	Approx. weight Peso
			P mm	Dp " inches	H1 mm	S mm	A1 mm	kN	kN	Kg/m
-	UF 922	2x2	9,525	3,59	7,25	1,30	8,00	9,3	-	0,22
-	UF 923	2x3	9,525	3,59	7,25	1,30	9,15	9,3	-	0,28
-	UF 944	4x4	9,525	3,59	7,25	1,30	12,80	18,5	-	0,42
-	UF 944R	4x4	9,525	3,59	7,9	1,57	14,90	26,1	-	0,52
-	UF 966	6x6	9,525	3,59	7,25	1,30	18,50	27,8	-	0,62
-	UF 966R	6x6	9,525	3,59	7,9	1,57	21,50	39,8	-	0,77
-	UF 988	8x8	9,525	3,59	7,25	1,30	24,00	36,8	-	0,82
LL 0822	UF 1222	2x2	12,70	4,45	11,0	1,43	7,90	18,6	17,8	0,39
LL 0844	UF 1244	4x4	12,70	4,45	11,0	1,43	13,90	37,6	31,1	0,74
-	UF 1244R	4x4	12,70	4,45	11,0	1,67	16,35	41,3	-	0,84
LL 0866	UF 1266	6x6	12,70	4,45	11,0	1,43	19,90	56,4	44,5	1,10
-	UF 1288	8x8	12,70	4,45	11,0	1,43	25,90	77	-	1,47
LL 1022	UF 1522	2x2	15,875	5,09	12,95	1,59	8,90	24,6	22,2	0,53
LL 1044	UF 1544	4x4	15,875	5,09	12,95	1,59	16,00	49,4	44,5	1,00
LL 1066	UF 1566	6x6	15,875	5,09	12,95	1,59	22,70	74,5	66,7	1,45
-	UF 1588	8x8	15,875	5,09	12,95	1,59	29,30	98,8	-	2,05
LL 1222	LL 1222	2x2	19,05	5,68	15,0	1,79	10,10	30,9	28,9	0,63
LL 1244	LL 1244	4x4	19,05	5,68	15,0	1,79	17,90	61,8	57,8	1,25
LL 1266	LL 1266	6x6	19,05	5,68	15,0	1,79	25,70	92,7	86,7	1,86
-	LL 1288	8x8	19,05	5,68	15,0	1,79	33,50	117,7	-	2,48
-	LL 1210	10x10	19,05	5,68	15,0	1,79	41,10	147,1	-	3,09
LL 1622	LL 1622	2x2	25,40	8,25	21,0	3,10	16,60	71,4	58	1,48
LL 1644	LL 1644	4x4	25,40	8,25	21,0	3,10	29,50	142,8	116	2,91
LL 1666	LL 1666	6x6	25,40	8,25	21,0	3,10	42,40	214,2	174	4,34
-	LL 1688	8x8	25,40	8,25	21,0	3,10	55,40	285,6	-	5,77
LL 2022	LL 2022	2x2	31,75	10,15	26,0	3,50	19,00	98,1	95	2,00
LL 2044	LL 2044	4x4	31,75	10,13	26,0	3,50	34,00	196,1	190	3,90
LL 2066	LL 2066	6x6	31,75	10,13	26,0	3,50	49,00	294,2	285	5,81
-	LL 2088	8x8	31,75	10,13	26,0	3,50	63,90	382,5	-	7,72
LL 2422	LL 2422	2x2	38,10	14,54	33,4	5,10	25,80	179,8	170	4,17
LL 2444	LL 2444	4x4	38,10	14,54	33,4	5,10	46,70	359,6	340	8,17
LL 2466	LL 2466	6x6	38,10	14,54	33,4	5,10	67,80	539,4	510	12,18
-	LL 2488	8x8	38,10	14,54	33,4	5,10	88,80	714,4	-	16,19
LL 2822	LL 2822	2x2	44,45	15,81	36	6,35	31,10	224,2	200	5,50
LL 2844	LL 2844	4x4	44,45	15,81	36	6,35	57,10	448,5	400	10,81
LL 2866	LL 2866	6x6	44,45	15,81	36	6,35	83,10	672,7	600	16,14
-	LL 2888	8x8	44,45	15,81	36	6,35	109,10	897	-	21,46
LL 3222	LL 3222	2x2	50,8	17,75	41	6,27	31,70	275	260	16,15
LL 3244	LL 3244	4x4	50,8	17,75	41	6,27	57,70	550	520	12,10
LL 3266	LL 3266	6x6	50,8	17,75	41	6,27	83,70	825	780	18,04
-	LL 3288	8x8	50,8	17,75	41	6,27	109,70	1100	-	24,00